



**Wall Hung Water Closet Bowl**  
**(6.0/13.25 LPF)**  
*Vitreous China*

## FEATURES

- **3446 Placidus™**

**Bowl:** 3446 Placidus™ (6.0/13.25 lpf), vitreous china elongated rim, whirlpool flush, siphon jet, 1½" [38] top spud, wall hung with self-draining jet.

**Valve:** Flushvalve with vacuum breaker, 1" [25] angle screwdriver stop and flush connection. Suggested (6.0 lpf) flushvalves are:

|                   |              |
|-------------------|--------------|
| Sloan "Royal"     | #111         |
| Delany "Flushboy" | #F402-1.6    |
| Zurn "Aquaflush"  | #Z-6000-WS-1 |

**Valve:** Flushvalve with vacuum breaker, 1" [25] angle screwdriver stop and flush connection. Suggested (13.25 lpf) flushvalves are:

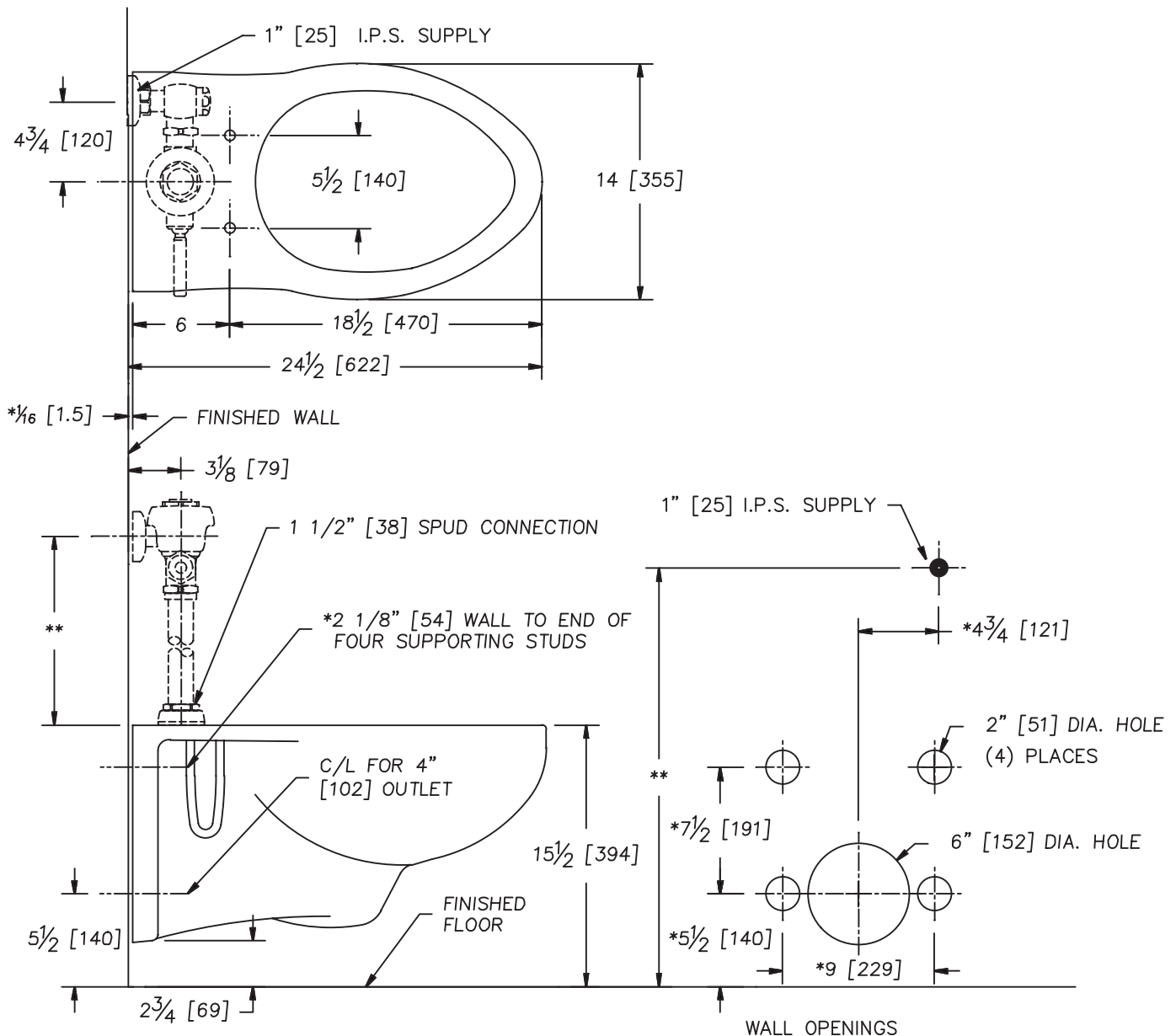
|                   |           |
|-------------------|-----------|
| Sloan "Royal"     | #115      |
| Delany "Flushboy" | #414-AVB  |
| Zurn "Aquaflush"  | #Z-6000-2 |

## NOTES

- Fixture conforms to CSA B45 standard.
- \*\*For efficient operation of the bowl, a minimum flowing water pressure of 25 P.S.I. is required at the valve.
- Flush valve supplied by others.
- Seat supplied by others.

## WATER ECONOMY FACTS

|                    |                       |
|--------------------|-----------------------|
| Trapway.....       | 2" [51]               |
| Water Surface..... | 12" [305] x 10" [254] |
| Water Seal.....    | 2 9/16" [65]          |



**NOTE:** ROUGHING-IN DIMENSIONS FOR CLOSET SUPPORT UNIT TO BE OBTAINED DIRECT FROM MANUFACTURER. CHECK WITH MANUFACTURER FOR PROPER OUTLET COUPLING EXTENSION BEYOND FINISHED WALL FOR OUTLET CONNECTION USE NEOPRENE OR RUBBER GASKETS. NOT FOR USE WITH A WAX RING.

\* THESE DIMENSIONS MUST BE MAINTAINED FOR PROPER INSTALLATION.

\*\* VARIABLE-CHECK WITH MANUFACTURER OF FLUSHVALVE FOR PROPER ROUGHING-IN DIMENSION.

CONTACT YOUR LOCAL BUILDING CODE FOR APPROVED MEASUREMENTS.

**IMPORTANT:** Roughing-in dimensions may vary 1/2" [13mm] and are subject to change or cancellation without prior notice. No responsibility is assumed for use of superseded or voided leaflets.

